

SURFACE MOUNTED "S1 FRAME" WITH OPAL OR PRISMATIC DIFFUSER



- **Frame** has a rectangular (or square) shape and is equipped with turn clips (thermoplastic or galvanized steel) which enable the diffuser to totally enclose the luminaire sides.
- **Normal (or electronic) ballast.**
- **Battery & battery charger** can be added on request.
- **T8 fluorescent lamps:** 18 w, 36 w, 58 w.

DIFFUSER TYPES

OPAL DIFFUSER

O : "BLOWN OPAL" diffuser.

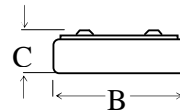
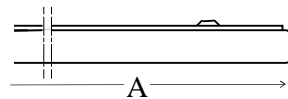


PRISMATIC DIFFUSER

P 1 : " BLOWN PRISMATIC " diffuser incorporating internal pyramidal prisms.



LUMINAIRE TYPES & DIMENSIONS



LUMINAIRE TYPE	LAMP (S)	DIMENSIONS		
		A	B	C
1 18 S1	1x18 w T8	640	60	65
2 18 S1	2x18 w T8	650	175	80
2 18/S1	2x18 w T8	640	205	80
3 18 S1	3x18 w T8	650	245	80
4 18 S1	4x18 w T8	650	300	80
4 18/S1	4x18 w T8	677	677	75
6 18 S1	6x18 w T8	677	677	85
1 36 S1	1x36 w T8	1275	80	80
2 36 S1	2x36 w T8	1280	175	80
3 36 S1	3x36 w T8	1280	205	80
4 36 S1	4x36 w T8	1280	300	80
1 58 S1	1x58 w T8	1570	80	80
2 58 S1	2x58 w T8	1570	175	80

(add diffuser to the luminaire type).

T8 : Ø 26 mm traditional tubular fluorescent lamps.

" / " : means bigger frame size