

SURFACE MOUNTED "W1 FRAME" WALL WASHER

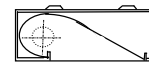


- Traditional rectangular shape.
- Asymmetrical lighting distribution, for vertical illumination of walls and objects.
- Normal (or electronic) ballast.

LAMPS

- T8 fluorescent lamps : 15 w , 38 w .
 Compact fluorescent lamps : 36w , 55 w .
 T5 fluorescent lamps : 28w , 39w , 54w .

REFLECTOR TYPES



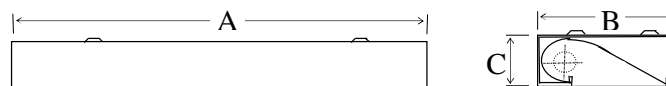
Reflector configuration consists of both circular and parabolic contours.

Reflector material :

“AL”: Anodized mirror aluminum reflector.

“S” : Anodized matted "satin" aluminum reflector.

LUMINAIRE TYPES & DIMENSIONS



LUMINAIRE TYPE	LAMP (S)	DIMENSIONS		
		A	B	C
1 15 SM W1	1x15w T8	595	195	66
1 36 SM W1	1x36w T8	1195	195	66
1 38 SM W1	1x38w T8	1195	195	66
1 36 SM W1	1x36w CFL	595	195	66
1 55 SM W1	1x55w CFL	595	195	66
1 28 SM W1	1x28w T5	1195	195	66
1 39 SM W1	1x39w T5	900	195	66
1 54 SM W1	1x54w T5	1195	195	66

(add reflector material to the luminaire type).

T8 : Ø 26 mm traditional tubular fluorescent lamps.

CFL : compact fluorescent lamps

T5 : Ø 16 mm tubular fluorescent lamps